



## 172 Total Bridges

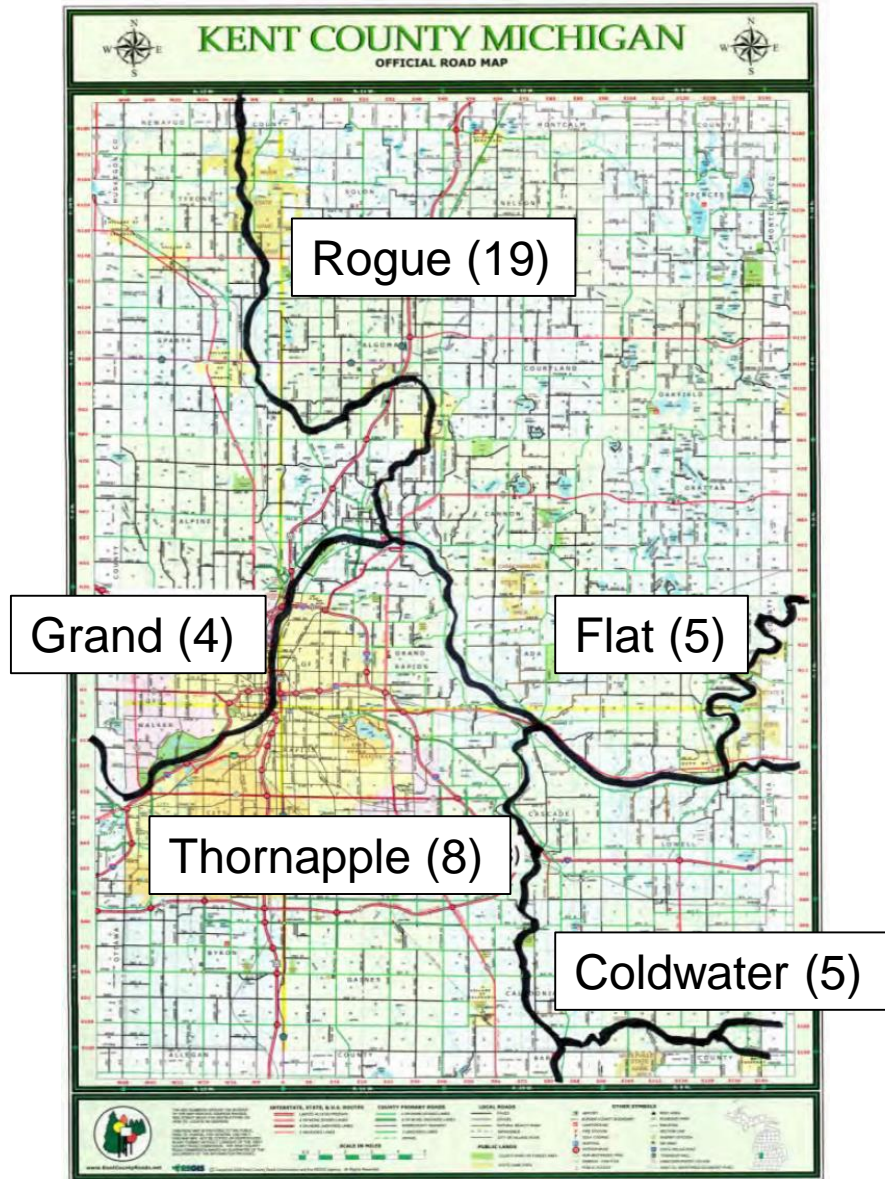
- 164 Over Water
- 1 Over Roadway
- 1 Over Railroad
- 5 Railroad Over
- 2 Pedestrian Over

Bridge lengths – 20 feet to 1,250 feet





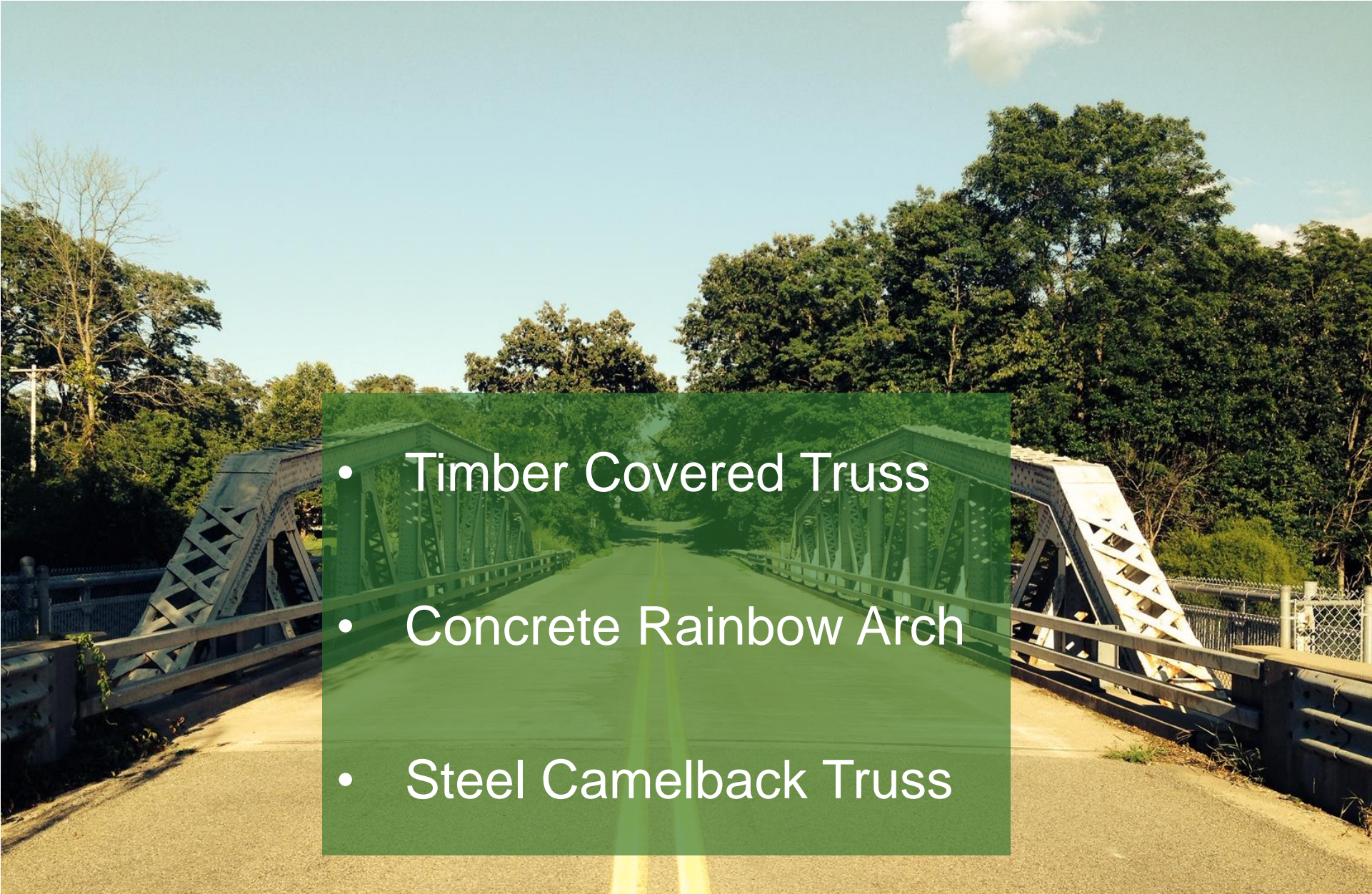
# Major Bridge Crossings







# Three Historic Bridges



- Timber Covered Truss
- Concrete Rainbow Arch
- Steel Camelback Truss





Built in 1871











Kent County  
Road Commission

# Pine Island Bridge



Built in 1924









Kent County  
Road Commission

# Borroughs Bridge



Built in 1925 / Relocated 1995









Kent County  
Road Commission

# Bridge Crew 2019

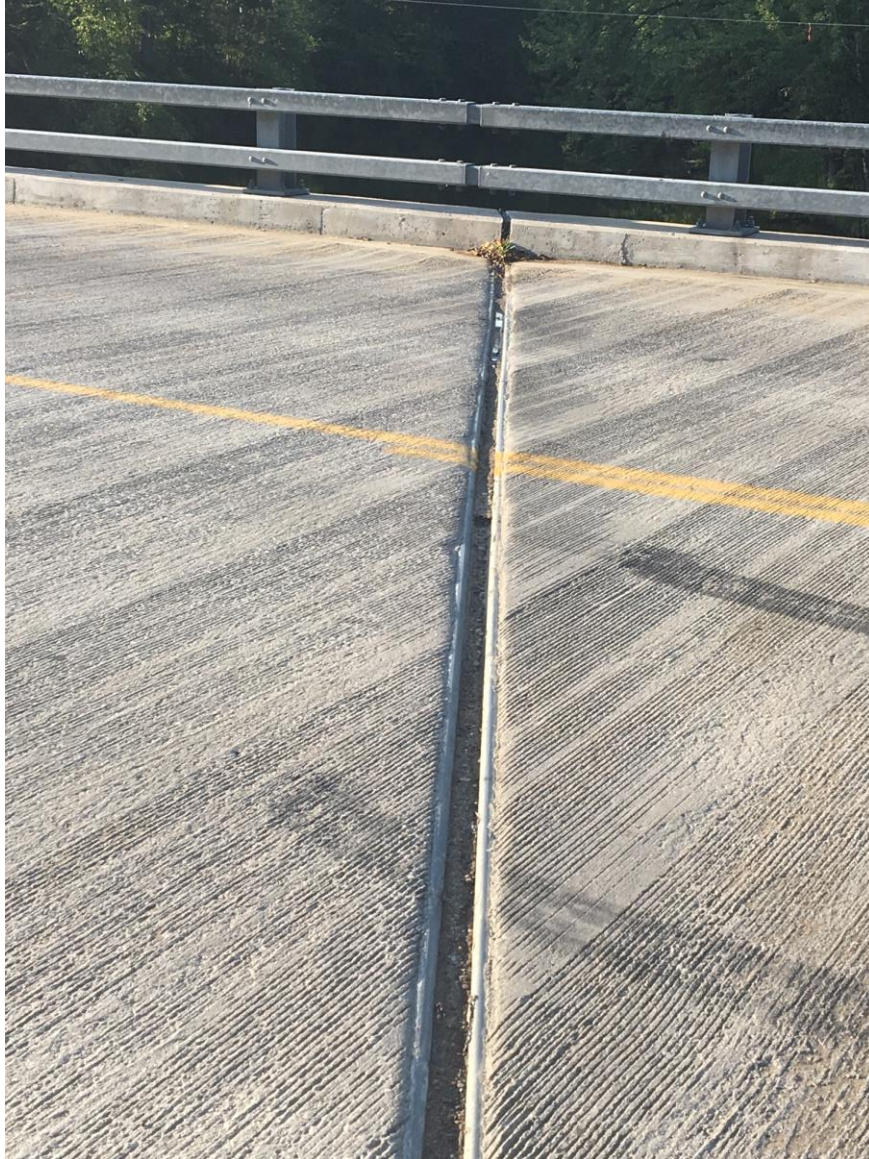






- Vegetation Control
- Deck Sweeping
- Joint Cleaning
- Waterproofing
- Epoxy Deck Seal
- Slope Repair
- Culvert Repair

















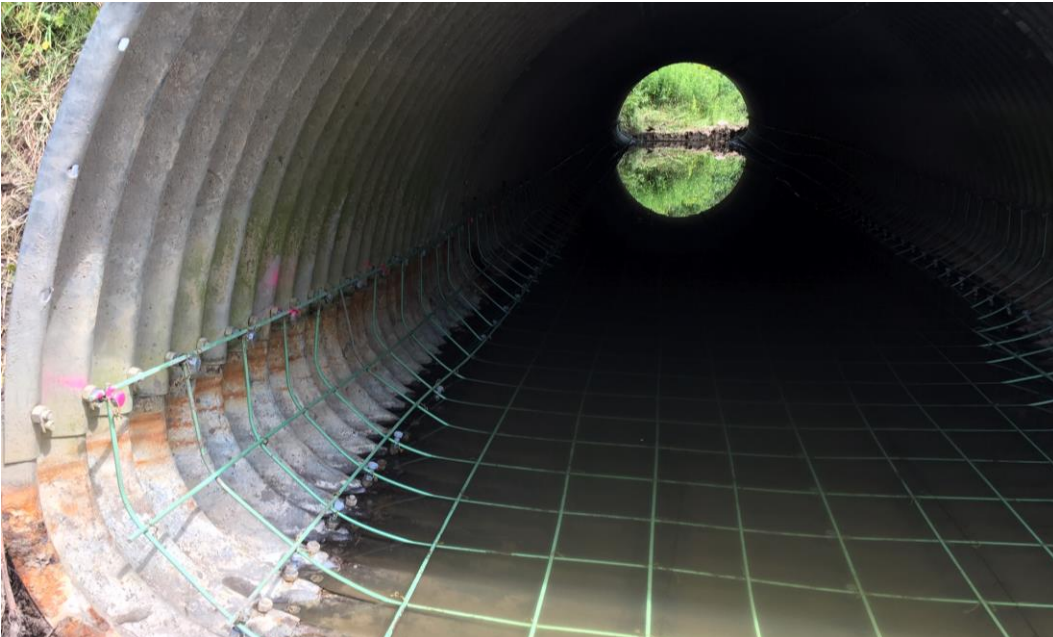
# Epoxy Deck Seal





















# Beam Grouting



















# Concrete Box Culvert







Kent County  
Road Commission

# Park Bridge Before





















